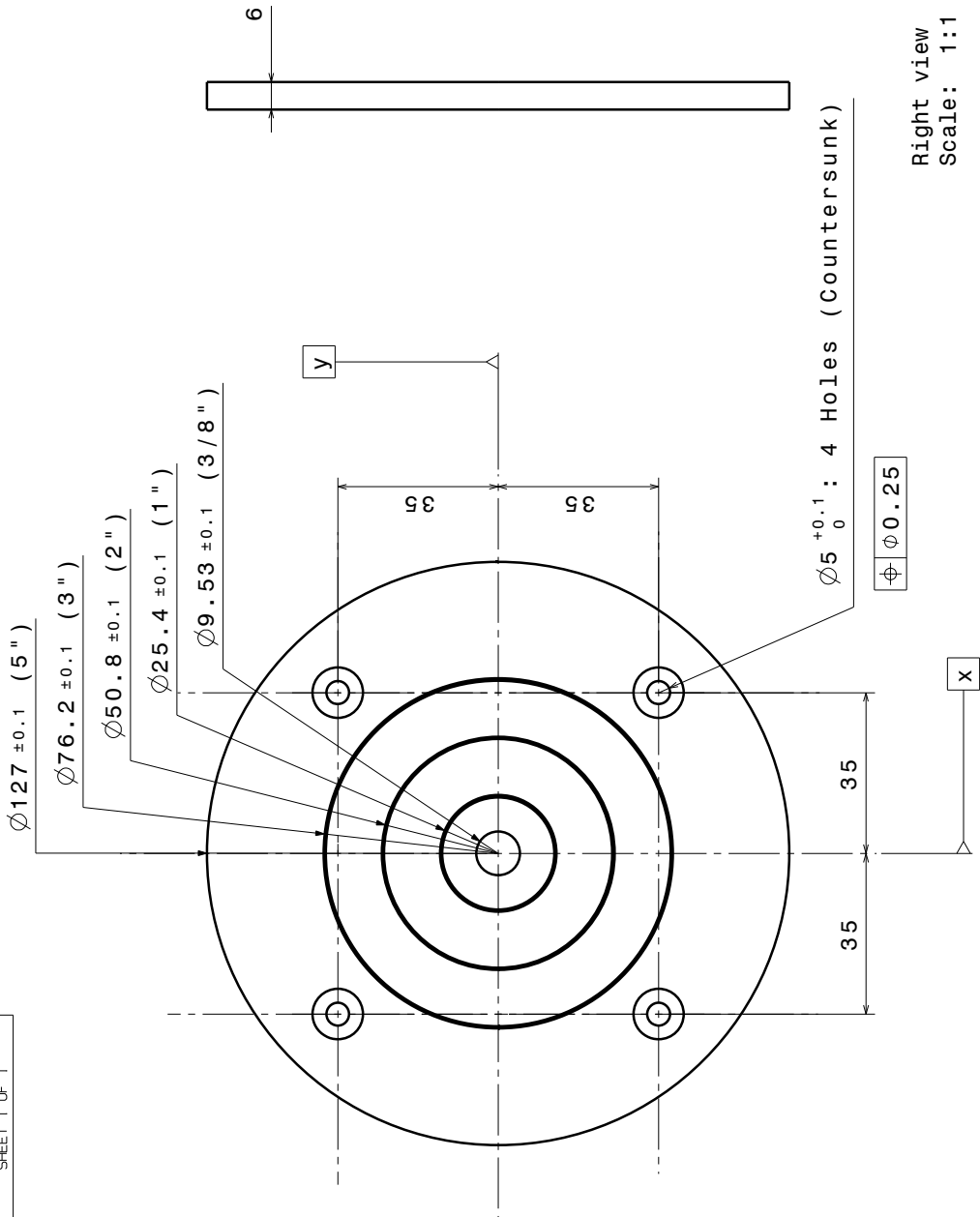


A B C D E F G

DRG. No. BT-10001
SHEET 1 OF 1

ISSUE .01
MODIFICATION PROTO RELEASE
DATE DEC 2005



GENERAL NOTES

- PART IS MANUFACTURED FROM STEEL. THE HIGHER GRADE THE BETTER AND IS POST HARDENED (ARMOUR PLATE IS OFTEN USED). SOME TRIAL AND ERROR MAYBE NEEDED TO DETERMINE THE BEST HARDNESS CHARACTERISTICS
- RINGS TURNED ON LATHE USING 90 DEGREE CUTTER TO DEPTH OF 0.5mm PRODUCING A 1mm THICK SCORING LINE
- MESUREMENTS REFERENCED TO DATUMS X & Y
- ONE UNIT IS REQUIRED FOR EACH TARGET
- PLATE FIXES TO THE MECHANISM PLATE BY FOUR M5 x 40mm COUNTERSUNK SOCKET SCREWS

MACHINED COMPONENTS

- TOLERANCES UNLESS OTHERWISE STATED:

LINEAR DIMENSIONS 100 AND UNDER $\pm 0.2mm$
 LINEAR DIMENSIONS OVER 100 AND UNDER 1000 $\pm 0.5mm$
 LINEAR DIMENSIONS OVER 1000 $\pm 1.0mm$
 ANGULAR DIMENSIONS $+1.0^{\circ}$
 HOLE POSITIONS -0.25

- REMOVE ALL BURRS AND SHARP EDGES

Front view
Scale: 1:1

Right view
Scale: 1:1



THIRD ANGLE PROJECTION

DO NOT SCALE

IF IN DOUBT ASK

DIMENSIONS IN MILLIMETRES

SCALE 1:1

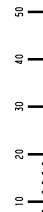
SHEET 1 OF 1

THIS DOCUMENT AND THE COPYRIGHT THEREIN ARE THE PROPERTY OF D. WYKES.

DRAWN D WYKES DATE DECEMBER 2005

TITLE TARGET PLATE

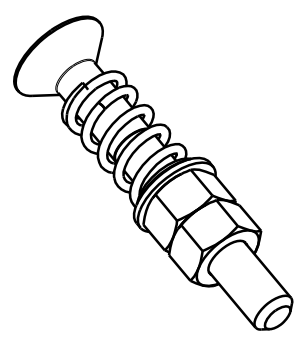
A3 DRG. No. BT-10001



A B C D E F G

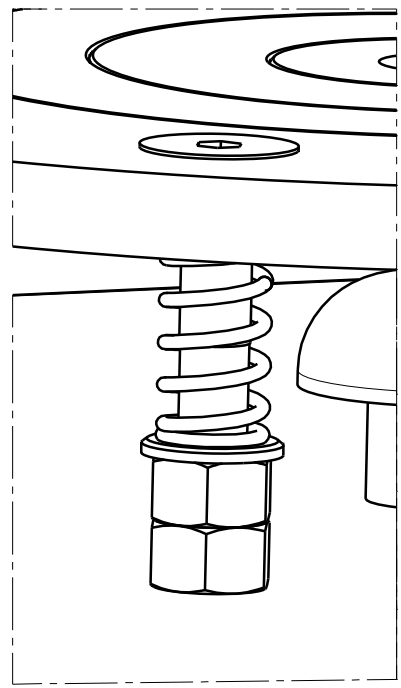
DRG. No. BT-10002
SHEET 1 OF 1

ISSUE .01
MODIFICATION
PROTO RELEASE
DATE DEC 2005

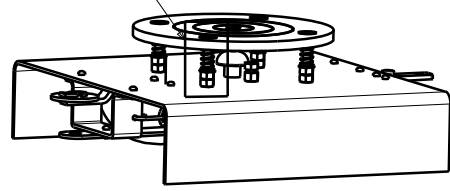


Isometric view
Scale: 2:1

TARGET PLATE FIXING ASSEMBLY DIMENSION TABLE			
DESC.	SIZE	LENGTH	QTY.
COUNTERSUNK SOCKET HEAD SCREW	M5	40	4
NUT	M5	-	8
FLAT WASHER	5mm	-	4
COIL SPRING	7-9mm DIA.	15mm (3/4 COMPRESSED)	4

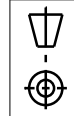


Detail A
Scale: 3:1



GENERAL NOTES

- ASSEMBLY BUILT FROM STANDARD OFF-SHELF PARTS
 - FOUR UNITS REQUIRED FOR EACH TARGET MACHINED COMPONENTS
1. TOLERANCES UNLESS OTHERWISE STATED:
- LINEAR DIMENSIONS 100 AND UNDER ±0.2mm
 - LINEAR DIMENSIONS OVER 100 AND UNDER 1000 ±0.5mm
 - LINEAR DIMENSIONS OVER 1000 ±1.0mm
 - ANGULAR DIMENSIONS ±1°-0'
 - HOLE POSITIONS ±0.25
2. REMOVE ALL BURRS AND SHARP EDGES



THIRD ANGLE
PROJECTION
DO NOT
SCALE

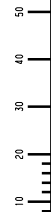
IF IN DOUBT ASK
DRAWN D WYKES
DATE DECEMBER 2005

DIMENSIONS IN MILLIMETRES
SCALE 2:1

SHEET 1 OF 1

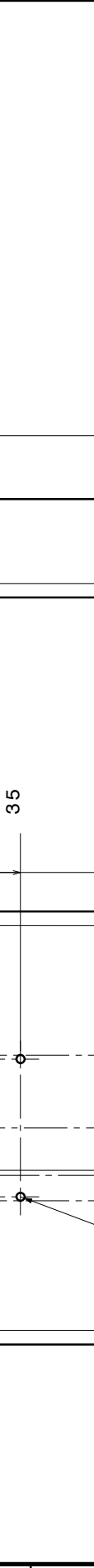
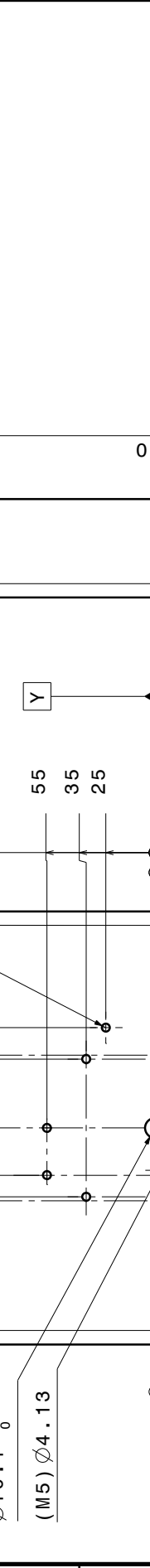
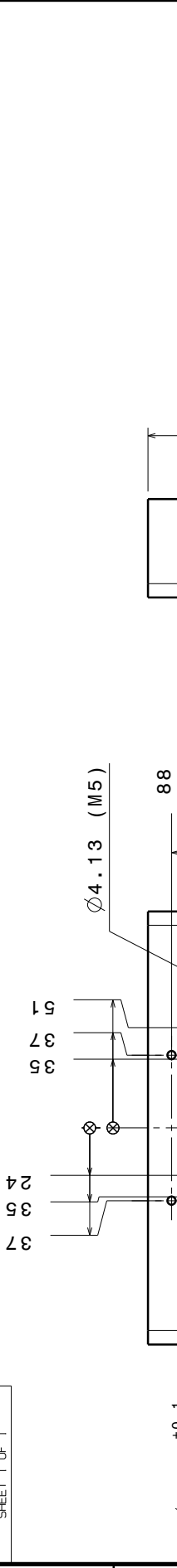
TITLE TARGET PLATE FIXINGS
A3 DRG. No. BT-10002

THIS DOCUMENT AND THE COPYRIGHT THEREIN ARE THE PROPERTY OF D. WYKES.



ISSUE	MODIFICATION	DATE
01	PROTO RELEASE	DEC 2005

DRG. No. BT-10003
SHEET 1 OF 1



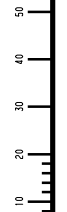
GENERAL NOTES

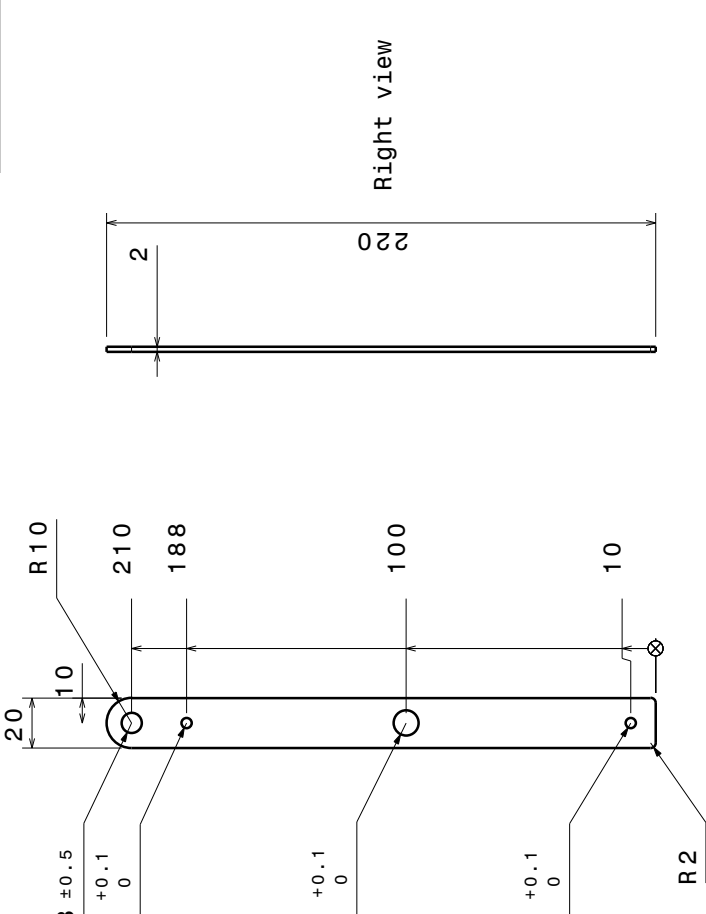
- PART IS MANUFACTURED FROM MILD STEEL PLATE
- MEASUREMENTS REFERENCED TO DATUMS X & Y
- ONE UNIT IS REQUIRED FOR EACH TARGET MACHINED COMPONENTS

1. TOLERANCES UNLESS OTHERWISE STATED:
 LINEAR DIMENSIONS 100 AND UNDER $\pm 0.2\text{mm}$
 LINEAR DIMENSIONS OVER 100 AND UNDER 1000 $\pm 0.5\text{mm}$
 LINEAR DIMENSIONS OVER 1000 $\pm 1.0\text{mm}$
 ANGULAR DIMENSIONS $\pm 1'-0"$
 HOLE POSITIONS ± 0.25

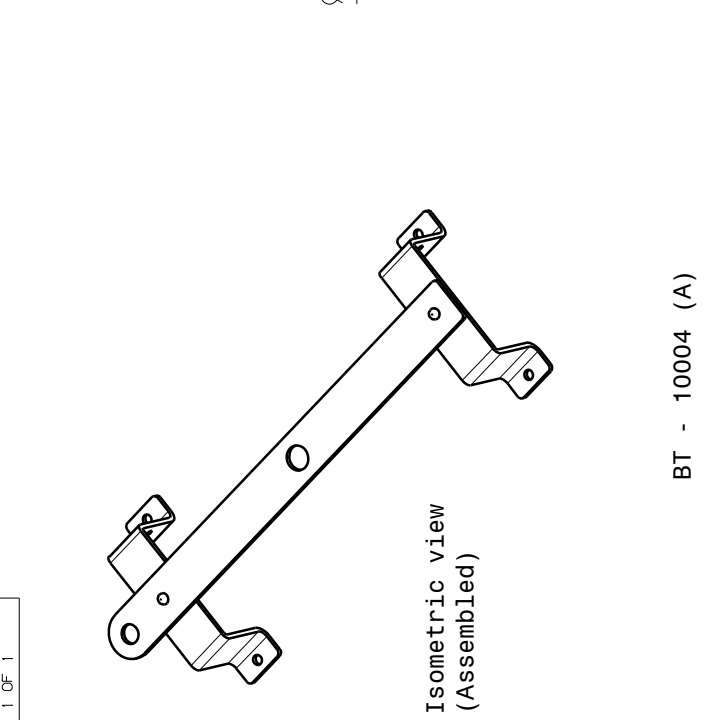
2. REMOVE ALL BURRS AND SHARP EDGES

THIRD ANGLE PROJECTION		DO NOT SCALE	IF IN DOUBT ASK	
DIMENSIONS IN MILLIMETRES		SHEET 1 OF 1	DRAWN	D WYKES
SCALE	1:2		DATE	DECEMBER 2005
THIS DOCUMENT AND THE COPYRIGHT THEREIN ARE THE PROPERTY OF D. WYKES.			TITLE	BACK PLATE
			DRG. No	BT-10003

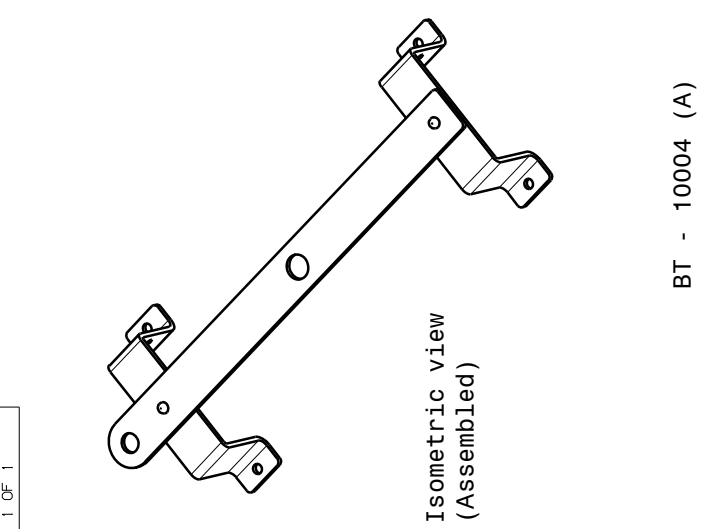




Front view



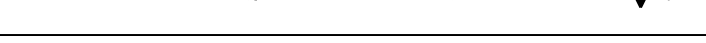
Right view



Isometric view (Assembled)



Front view



Right view

BT - 10004 (A)

IF IN DOUBT ASK

DO NOT SCALE

THIRD ANGLE PROJECTION

SCALE 1:2

SHEET 1 OF 1

DRAWN D WYKES

DATE DECEMBER 2005

TITLE HANGER BAR & BRACKETS

DRG. No. A3

BT-10004

THIS DOCUMENT AND THE COPYRIGHT THEREIN ARE THE PROPERTY OF D WYKES.

GENERAL NOTES

1. PARTS ARE MANUFACTURED FROM MILD STEEL PLATE

2. RIVETTED TOGETHER WITH STANDARD 4.0mm RIVETS

3. TWO UNITS OF (A) PART AND ONE UNIT OF (B) PART IS REQUIRED FOR EACH TARGET

MACHINED COMPONENTS

1. TOLERANCES UNLESS OTHERWISE STATED:

LINEAR DIMENSIONS 100 AND UNDER ±0.2mm

LINEAR DIMENSIONS OVER 100 AND UNDER 1000 ±0.5mm

LINEAR DIMENSIONS OVER 1000 ±1.0mm

ANGULAR DIMENSIONS ±1°-0'

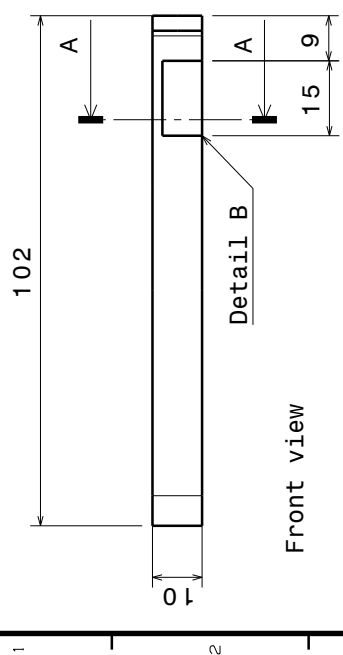
HOLE POSITIONS ±0.25

2. REMOVE ALL BURRS AND SHARP EDGES

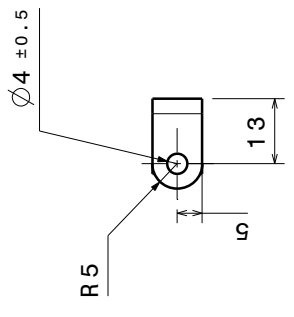


DRG. No.	BT-10005 (A)
SHEET 1 OF 1	

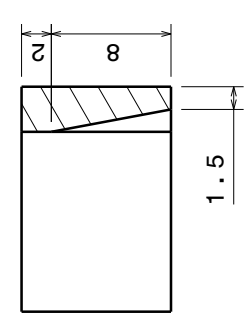
ISSUE	MODIFICATION	DATE
01	PROTO RELEASE	DEC 2005



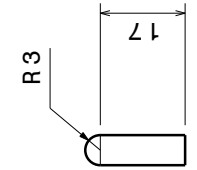
Front view



Right view

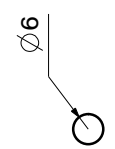


Section view A-A
Scale: 3:1

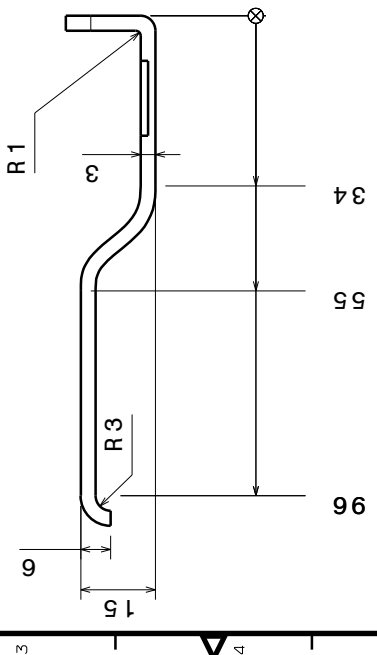


Front view

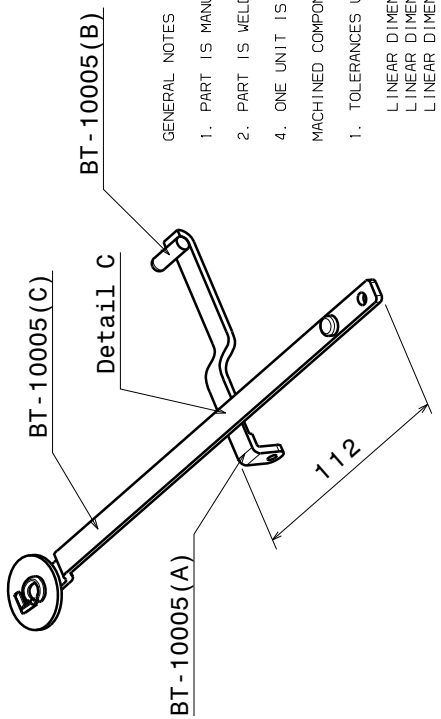
WELDED TO BT-10005 (A)
AS SHOWN



Bottom view

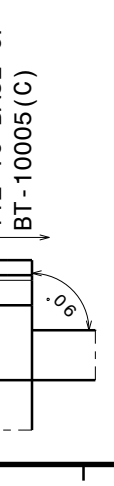


Bottom view

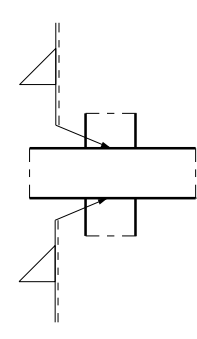


GENERAL NOTES

- PART IS MANUFACTURED FROM MILD STEEL
- PART IS WELDED TO PART BT-10005 (B)
- ONE UNIT IS REQUIRED FOR EACH TARGET MACHINED COMPONENTS
- TOLERANCES UNLESS OTHERWISE STATED:
 - LINEAR DIMENSIONS 100 AND UNDER $\pm 0.2\text{mm}$
 - LINEAR DIMENSIONS OVER 100 AND UNDER 1000 $\pm 0.5\text{mm}$
 - LINEAR DIMENSIONS OVER 1000 $\pm 1.0\text{mm}$
 - ANGULAR DIMENSIONS $\pm 1^{\circ}-0'$
 - HOLE POSITIONS -0.25

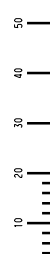


Detail B: LOCATION REF FOR
WELDING TO PART BT-10005 (C)



Detail C: REVERSE VIEW
WELD INSTRUCTIONS

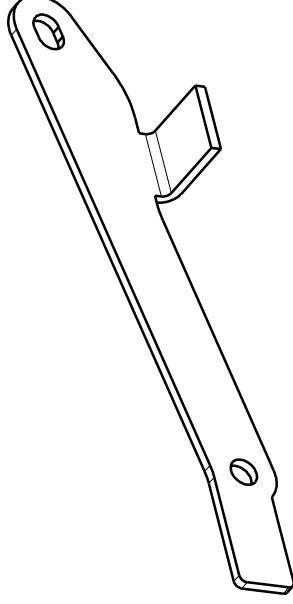
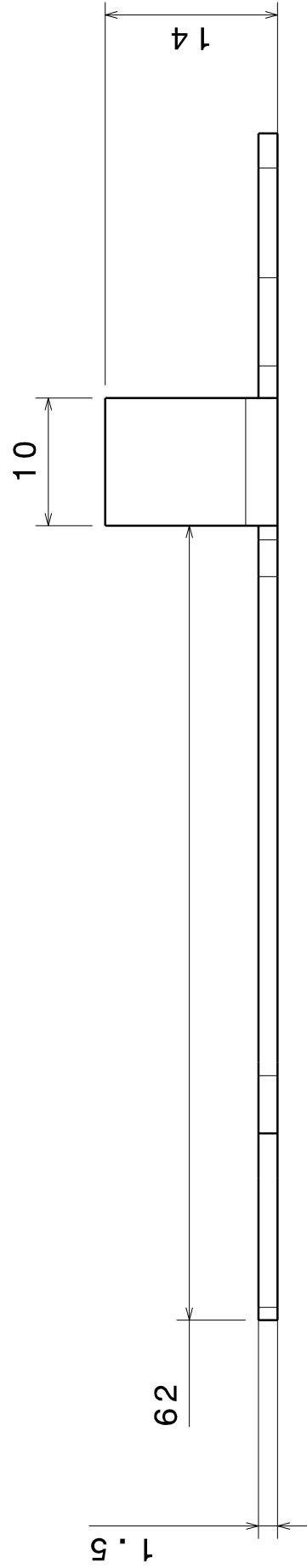
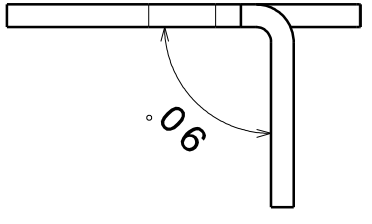
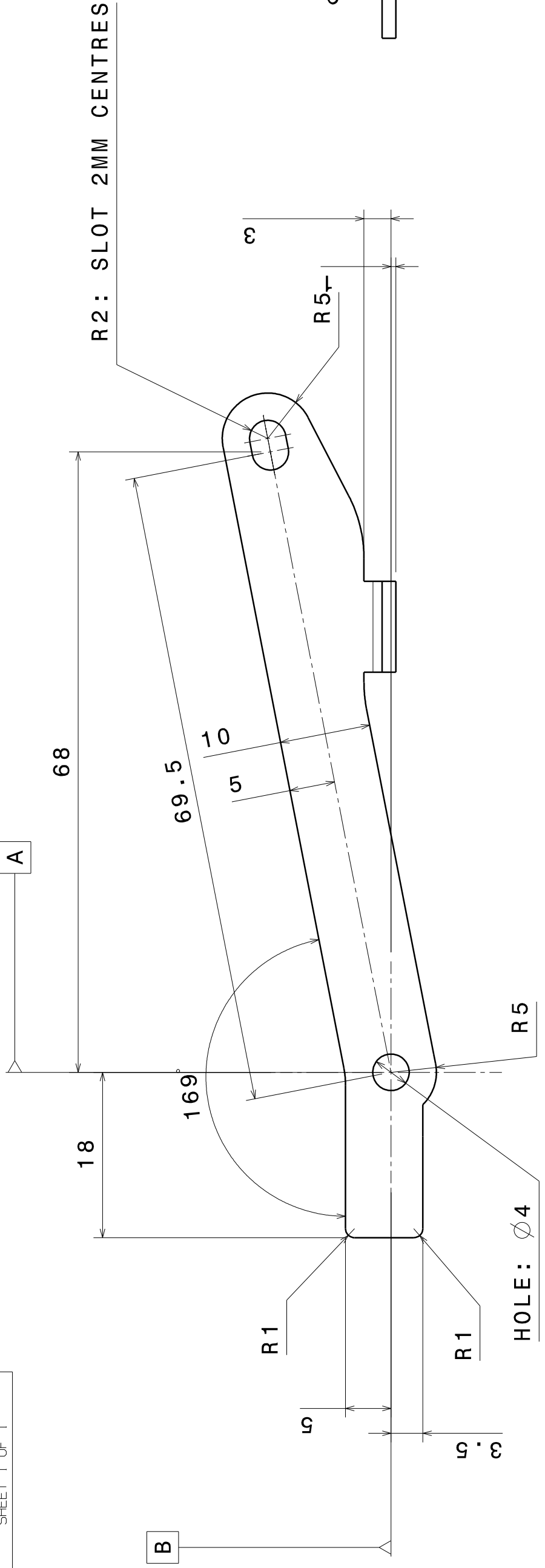
THIRD ANGLE PROJECTION	DO NOT SCALE	IF IN DOUBT ASK	
		DRAWN	DATE
DIMENSIONS IN MILLIMETRES	SHEET 1 OF 1	D WYKES	DECEMBER 2005
SCALE 1:1		TITLE	RESET ROD (HAMMER BAR)
THIS DOCUMENT AND THE COPYRIGHT THEREIN ARE THE PROPERTY OF D WYKES.		DRG. No	BT-10005 (A)



ISSUE	MODIFICATION	DATE
01	PROTO RELEASE	JUL 2007

A B C D E F G

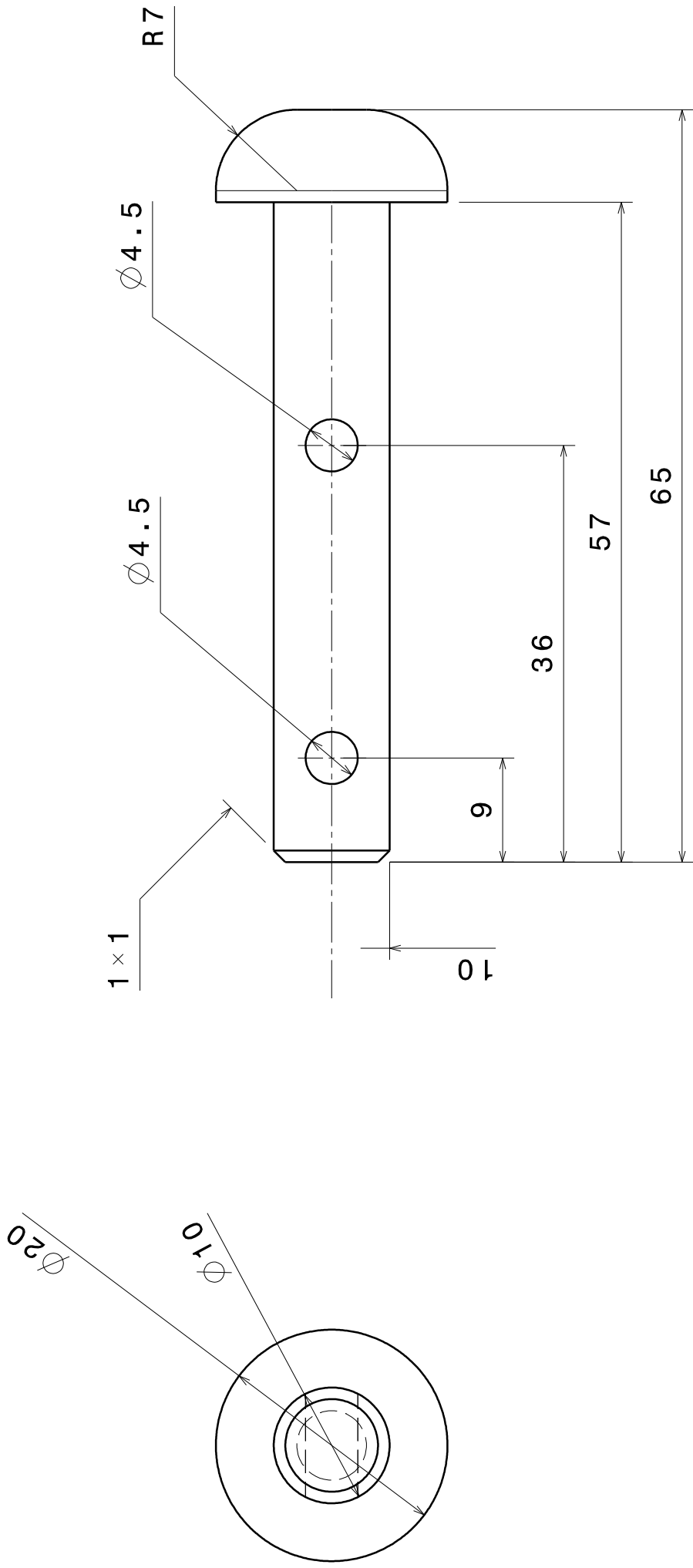
DRG. No.	BT-10006
	SHEET 1 OF 1



Isometric view
Scale: 1:1

THIRD ANGLE PROJECTION	DO NOT SCALE	IF IN DOUBT ASK	
		D WYKES	DATE DECEMBER 2005
DIMENSIONS IN MILLIMETRES		TITLE	DRG. No
SCALE	21	A3	BT-10006
SHEET 1 OF 1			
THIS DOCUMENT AND THE COPYRIGHT THEREIN ARE THE PROPERTY OF D WYKES.			



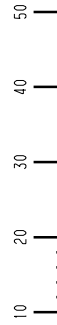


GENERAL NOTES

- PART IS MANUFACTURED FROM STEEL, THE HIGHER GRADE THE BETTER AND IS POST HARDENED (ARMOUR PLATE IS OFTEN USED). SOME TRIAL AND ERROR MAYBE NEEDED TO DETERMINE THE BEST HARDNESS CHARACTERISTICS

MACHINED COMPONENTS

- TOLERANCES UNLESS OTHERWISE STATED:
 LINEAR DIMENSIONS 100 AND UNDER $\pm 0.2\text{mm}$
 LINEAR DIMENSIONS OVER 100 AND UNDER 1000 $\pm 0.5\text{mm}$
 LINEAR DIMENSIONS OVER 1000 $\pm 1.0\text{mm}$
 ANGULAR DIMENSIONS $\pm 1_{-0}^{\circ}$
 HOLE POSITIONS $_{-0.25}$
- REMOVE ALL BURRS AND SHARP EDGES



	THIRD ANGLE PROJECTION	DO NOT SCALE	IF IN DOUBT ASK
	DIMENSIONS IN MILLIMETRES	SHEET 1 OF 1	
SCALE	21	TITLE	DRAWN
THIS DOCUMENT AND THE COPYRIGHT THEREIN ARE THE PROPERTY OF D WYKES.		A3	DRG. No
		D WYKES DATE DECEMBER 2005	
		PLUNGER	
		BT-10007	



HOSTED BY:

<https://www.airrifle.co.za/>