

**Reset target assembly:**

1. Parts

Below are what you received in the mail:



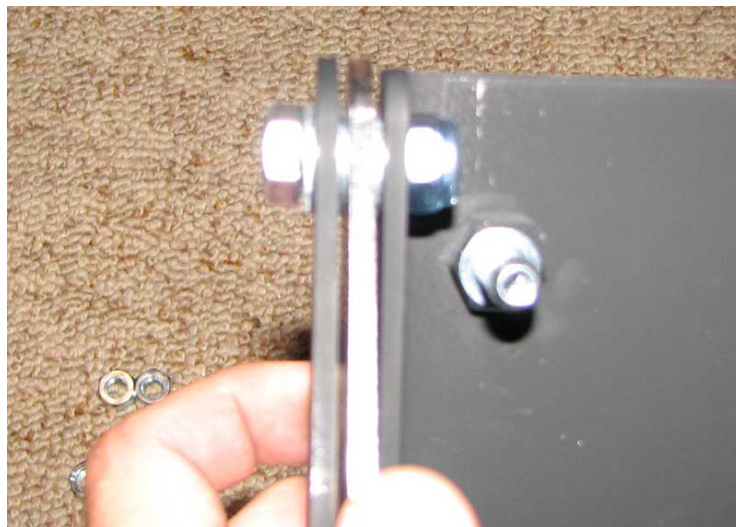
- 1 Leg
- 1 Body
- 1 Reset Paddle
- 1 Knockdown Paddle
- 4 Reducers
- 9 M8 Washers
- 4 M8 Nylock Nuts
- 6 M8 Nuts
- 2 M8 20mm Bolts
- 2 M8 30mm Bolts
- 1 M8 40mm Bolts
- 1 M8 50mm Bolts

2. Put the body and leg together using one 30mm M8 bolt at the top and one 20mm M8 bolt at the bottom. Use the standard M8 nuts without washers and pull together nice and tight.

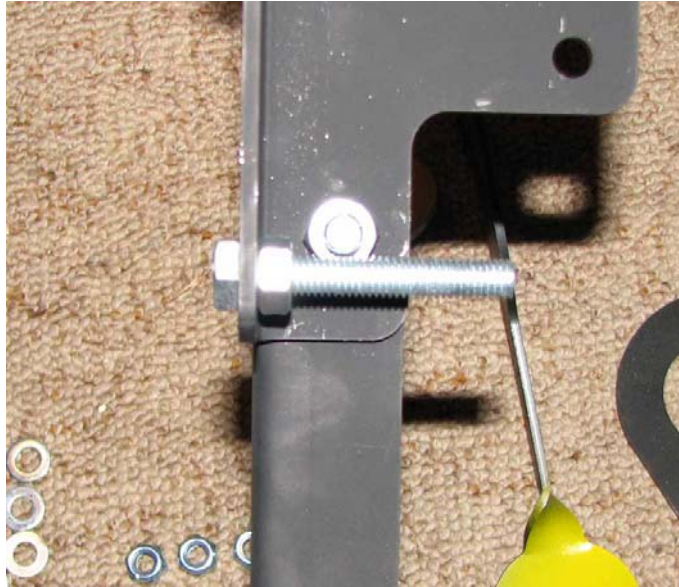


3. Take 2 reducers. Use a 20mm M8 bolt and 3 washers. Place the bolt, washers and reducers together as such.

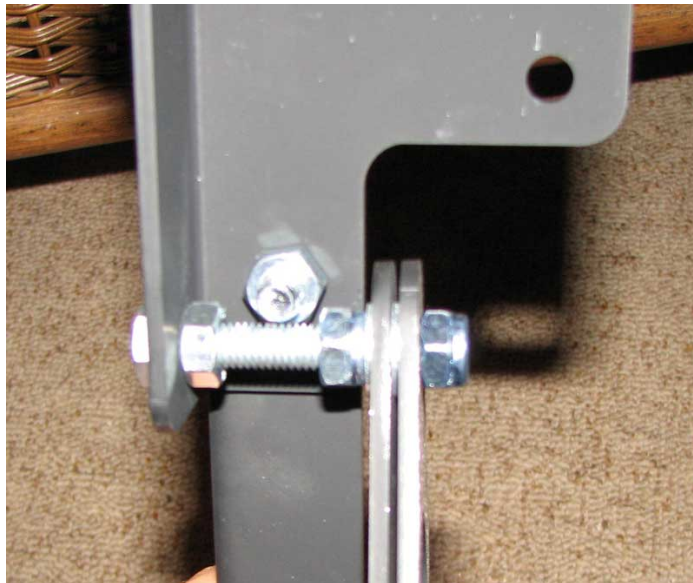
4. Add the setup to the main body at the top reducer mount using a M8 Nylock nut without washers on the inside.



5. Place the 50mm M8 bolt through the bottom reducer mounting hole and tighten without washer with a normal M8 nut.



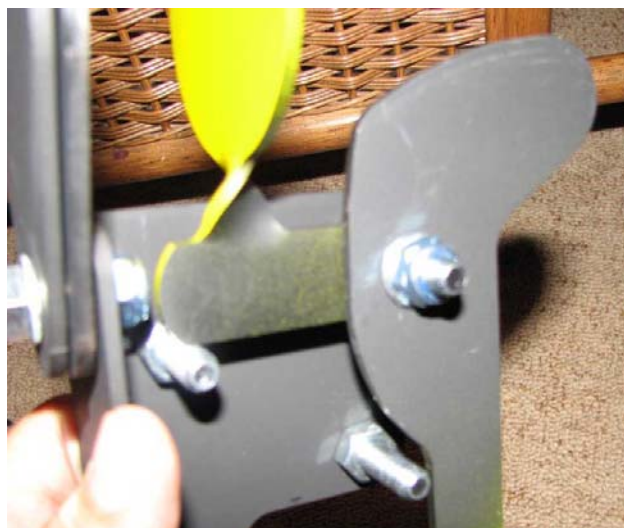
6. Add a nylock nut, washer, reducer, washer, reducer, washer and nylock nut to the 50mm M8 bolt.



7. Use a 40mm M8 bolt, 2 Normal M8 nuts and add them to the top rear mounting hole for the paddles. Add the remaining 30mm M8 bolt and normal nut to the bottom rear hole.



8. Add a M8 washer, the knockdown paddle, washer, reset paddle (long), washer and nylock nut onto the protruding bolt. The paddles need to move freely.



You now have one reset target. Enjoy!

